

## JOB PROGRESS REPORT TO CUSTOMER

JOB DETAILS	
<b>VESSEL:</b>	30m Landing Craft
<b>REPORTED TO:</b>	IDC
<b>DATE:</b>	5 <sup>th</sup> February 2025
<b>JOB NO.:</b>	MOC 217

**CONTENT:**

Photos below demonstrating job progress till 5<sup>th</sup> Feb 2025

### **1. Forward anchor pocket fabrication**



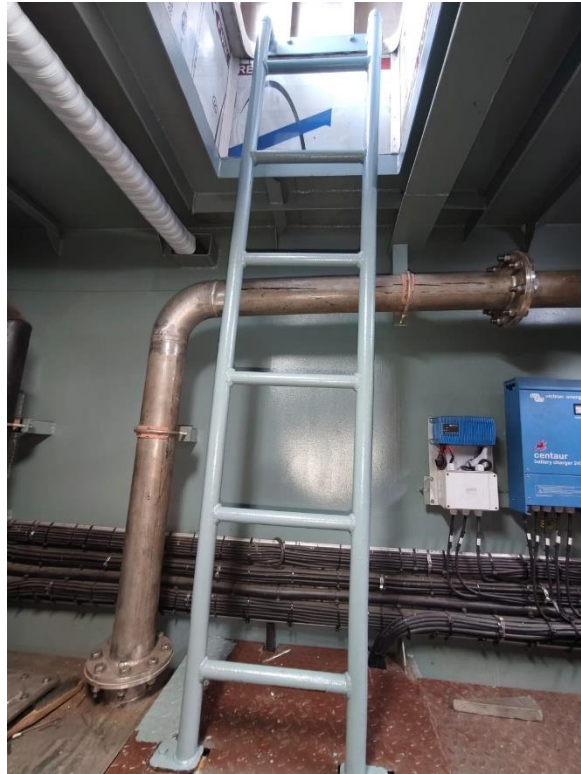
**2. Tiller room door with port glass fitting.**



**3. Forward anchor chain pocket fabrication**



#### 4. Engine room access ladder fitting



#### 5. Capstan Installation



## 6. Water marker installation



## 7. Shaft with gearbox coupling



## 8. Steering system Installation



## 9. Sewage treatment plant (STP) installation



## 10. Aft anchor pocket fabrication

