

GA: AMT2036-001-1-C

Products listed and types are indicative of quality, alternatives may be considered to suit the buyer's application or availability.

GENERAL

Application	Offshore and interisland cargo and passenger craft, survey and seismic services, medical evacuations etc.
Vessel Type	Shallow draft landing craft
Designer	Australian Marine Technology Pty Ltd
Builder	MOC Shipyards Pvt Ltd
Crewing	5 plus crew with 12 PAX
Classification	BV cargo passenger unrestricted
Construction	Steel hull / aluminium superstructure

DIMENSIONS

Length Overall	30.0 meters
Beam	8.0 meters
Draft	2.20 meters loaded, 1.10 lightship
Clear Deck Area	220 meters square
Deck Load	150 tonnes
Deck Load	2.0 tonnes/m2 (18T axle loading)

PERFORMANCE

Economic Speed	8 knots @ 75% MCR
Speed Maximum	10 knots @ 100% MCR
Range	800 NM with 10% reserve

MACHINERY

Main Engines	2 x Caterpillar C9 @ 260 kW each
Propulsion	FPP aligned with keels c/w twin rudders
Generators	2 x 45 kW 415V 50 hz
Exhaust	Dry stacks aft

TANK CAPACITIES

Fuel Oil	16,000 litres
Potable Water	8,000 litres
Cargo Fuel	Up to 50,000 litres independent tanks (opt)
Fuel Transfer	Via manifold delivery > 200 meters (opt)

AUXILIARY EQUIPMENT

Sewage Treatment	1,000 litres, (optional STP)
Oily Water Separator	15ppm (optional)
Fire Hydrants	3 station
Fixed Fire System	CO2 (if required)
Bilge System	Mechanical with electric backup
Tugger Winch	10 tonne hydraulic (optional)

ACCOMMODATION

Airconditioned and heated habitable spaces, cabins 1 x 4 person and 1 x 1 person. Galley, mess, large store, WC's and showers.

DECK EQUIPMENT

Fendering	Half round strake c/w aircraft tyres
Deck Protection	Hardwood timber (optional)
Cargo Lashing	Recessed SWL 2 tonne
Deck Crane	Knuckle boom 1 tonne @ 15 meters (optional)
Mooring	8 x double bit bollards
Plating	Hull 6mm, bottom 8mm and cargo deck 10mm
Access	Gangway and gunwale door
Anchor	2 x 200 kg with 2 x 110 chain, 2 x winches
Loading Ramp	6.00 meter clear width, electric winches

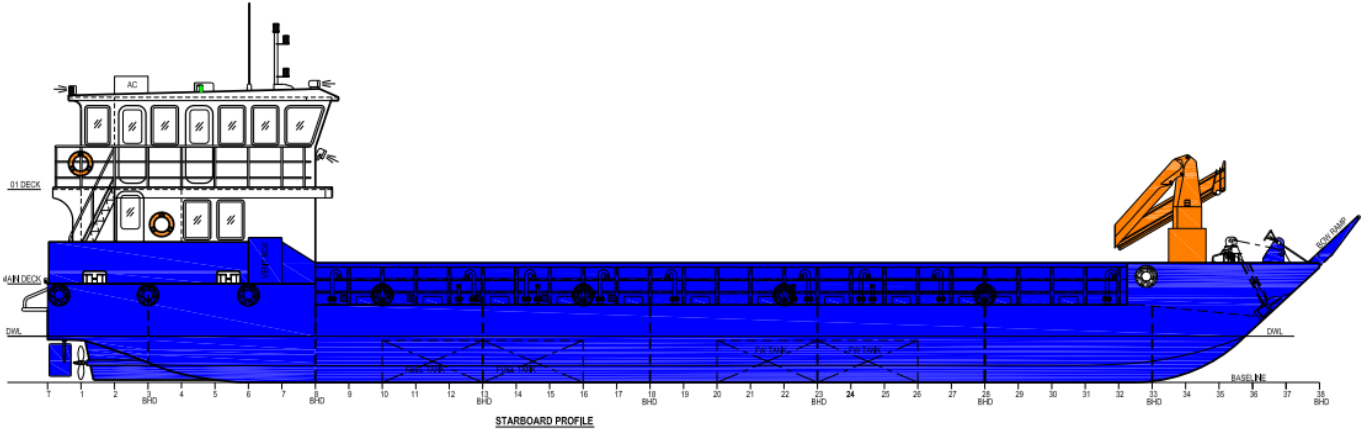
NAVIGATION

Searchlight	2 x Francis L300 remote control
Radar System	Simrad NSS16 MDF Halo 20 48 NM
Echo Sounder	Simrad BSM 3 c/w 1 kW TXPR
Nav Plotter	Simrad NSS16
GPS	Simrad GS25
DGPS	Simrad MX610
Auto Pilot	Simrad AP70
SSB / HF Radio	Icom M85E
VHF Radio	Icom M510E
Handheld Radio	1 x Icom M85E
Compass	Simrad Fluxgate FC40
Intercom	2 x Icom M510E c/w wireless remote
Barometer / Clock	As directed by Flag State
Navigation Lights	SOLAS approved
Fog Horn	SOLAS approved
Deck Lights	6 x recessed
EPIRB	Simrad 406
SART	Simrad SA70
Inmarsat	C system iFleet one wideye

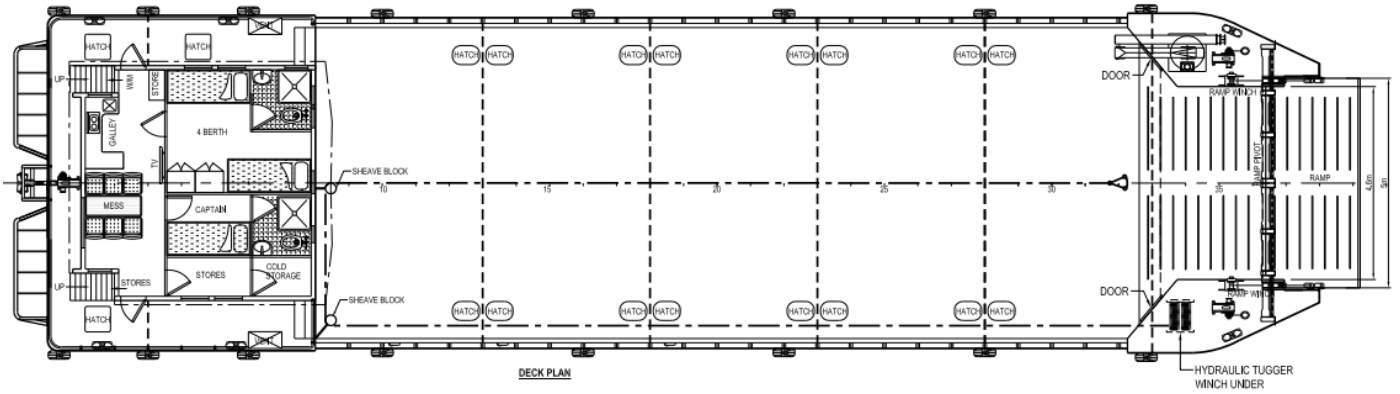
LIFE SAVING

Life Rafts	2 x 20 person SOLAS
Personal Flotation	20 x SOLAS
Tender	8.0 meter c/w 40 HP (optional)

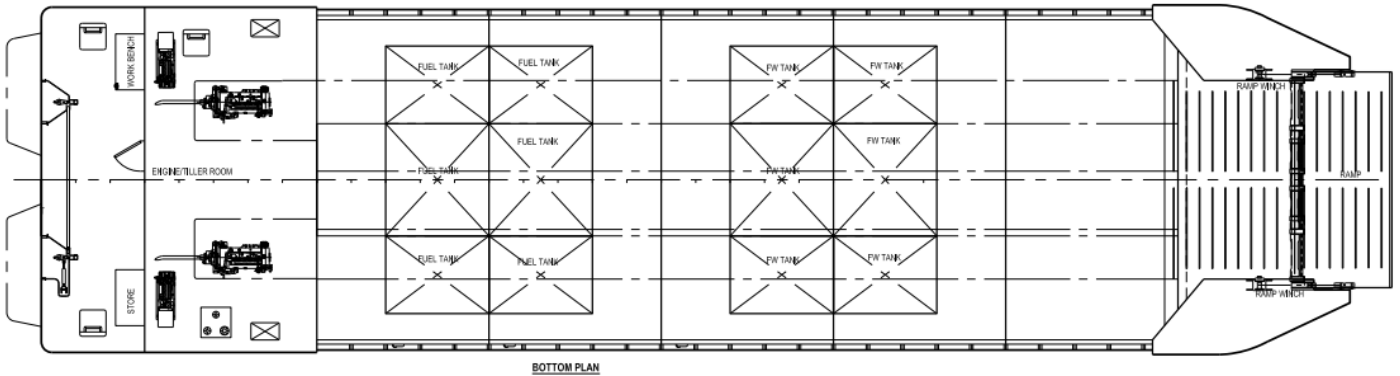
MOC DAMPIER 30m LANDING CRAFT



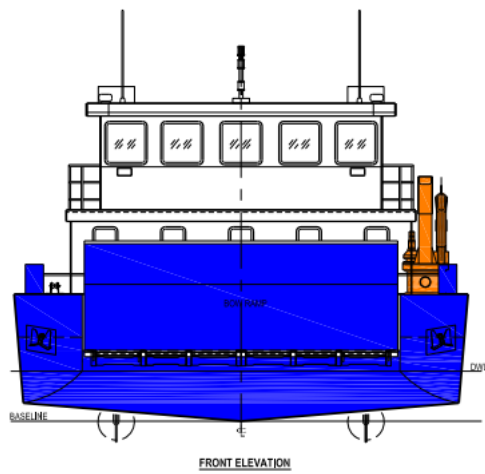
STARBOARD PROFILE



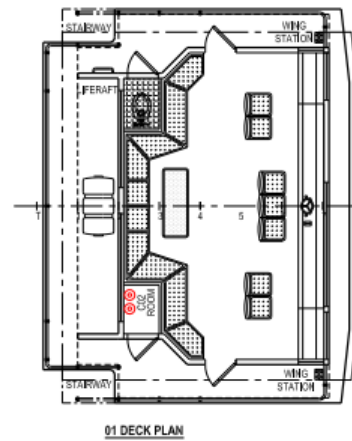
DECK PLAN



BOTTOM PLAN



FRONT ELEVATION



01 DECK PLAN