

JOB PROGRESS REPORT TO CUSTOMER

JOB DETAILS	
VESSEL:	30m Landing Craft
REPORTED TO:	IDC
DATE:	18 th January 2025
JOB NO.:	MOC 217

CONTENT:

Photos below demonstrating job progress till 18th Jan 2025

1. Tiller Room – Air Ventilation Blower Installation & Connection (Port & STBD)





2. Engine Room – Air Ventilation Blower Installation & Connection (Port & STBD)





3. Engine Room – OWS Installation & Connection

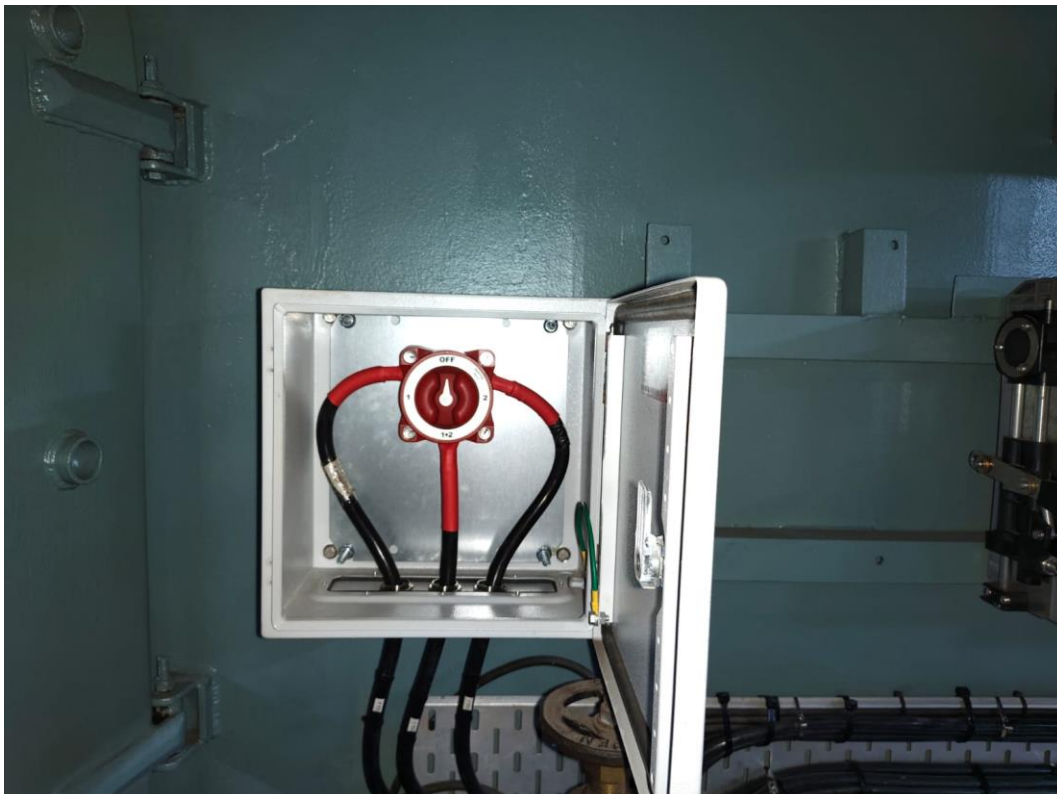


4. Engine Room – Battery Charger Connection





5. Engine Room – Battery Selector Switch Panel Connections



6. Engine Room – Battery Installation



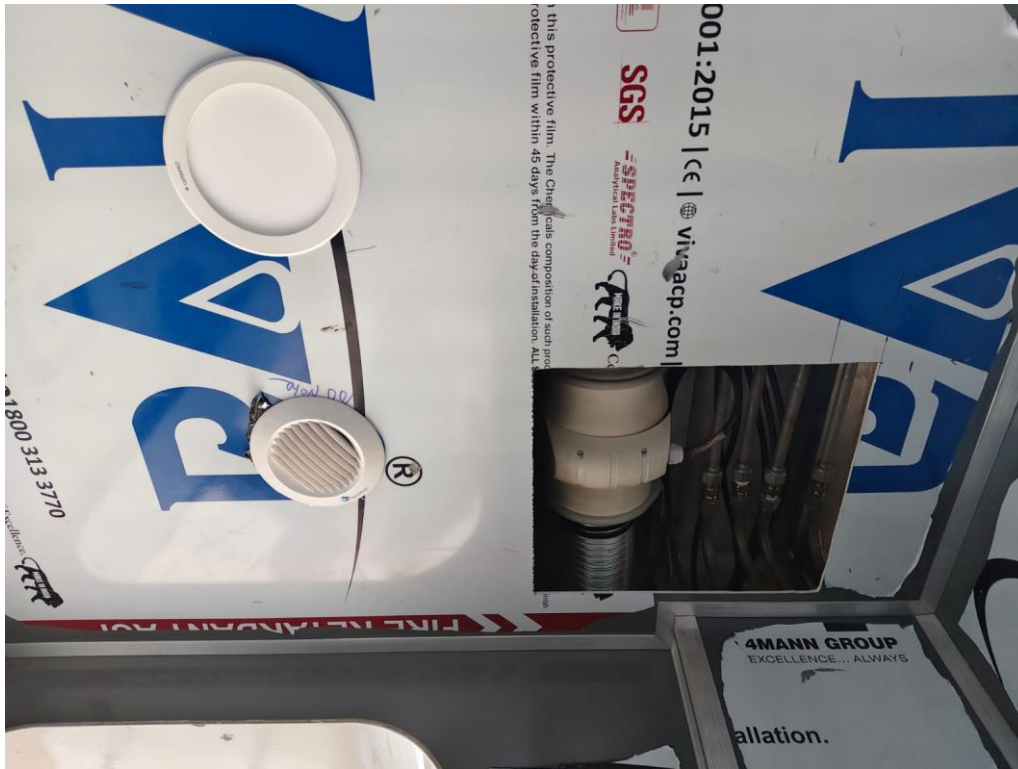
7. Compartment 1 – Water Maker Panel Board Installation



8. Compartment 1 – Fresh Water Pump Control Panel Installation and Connection

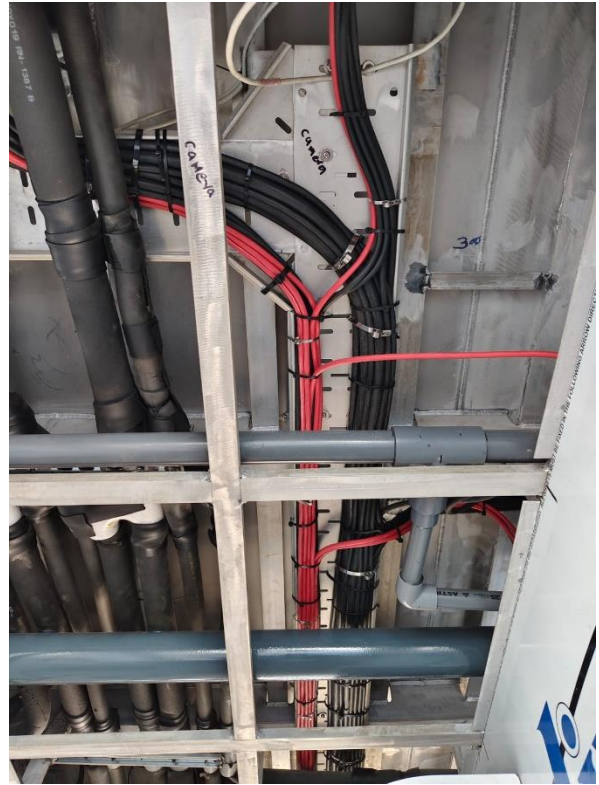


9. Superstructure – Toilet Blower Installation and Connection, Ventilation Grill Fitment





10. Superstructure – Cable Binding with SS Insulated Cable ties



**11. Wheelhouse (Bridge) – Toilet Blower Install and Connection,
Ventilation Grill Fitment**



12. Under Water – Rudder & Propeller Installation

